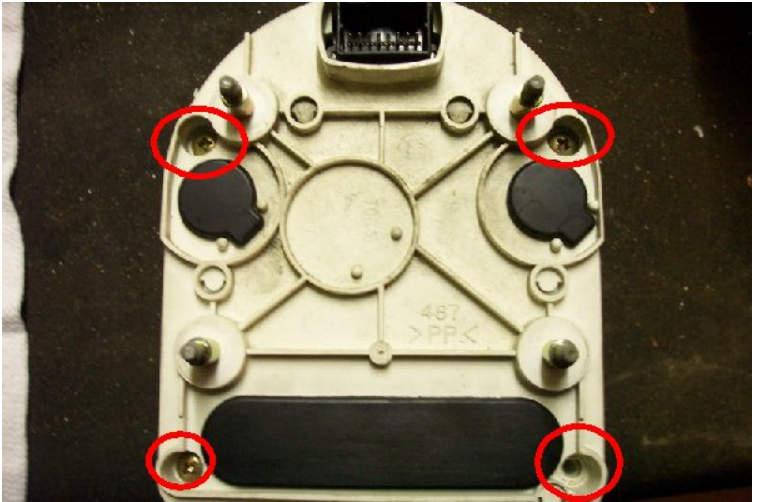


2002 Suzuki Intruder 1500

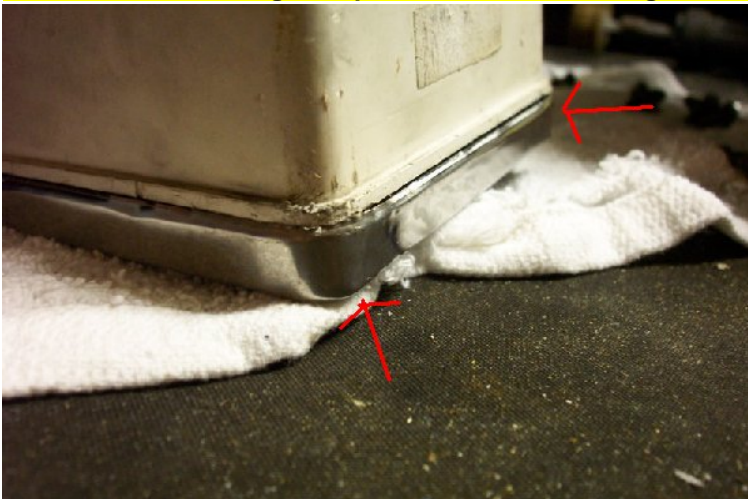
custombikerstuff@Gmail.com



This is the original speedo face and housing



Remove the 4 screws



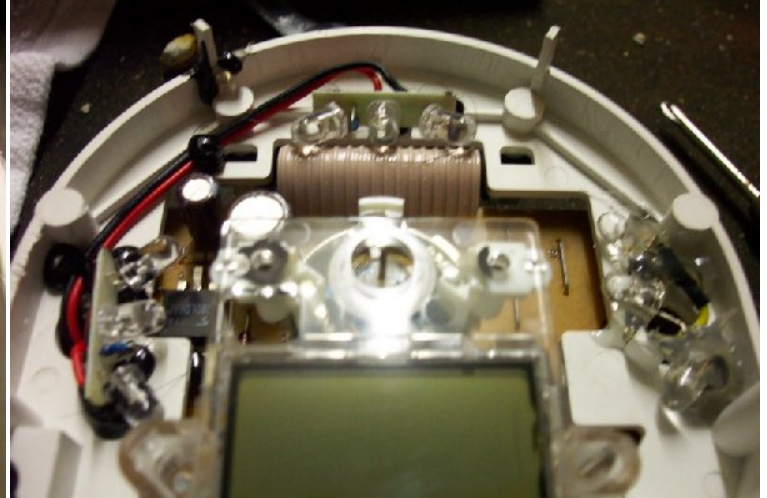
Pry up the 4 corners and any other part that may obstruct the housing from being removed - very carefully!



Bottom housing has 2 screws that need removed and speedo needle needs removed. CAUTION: needle is fragile and will break if you're not careful. A chip puller works the best to remove the needle but a fork works well.



Remove the speedo face and the needle stop pin at this point so you can reuse it on your new dial.



This is what it looks like underneath



Install new speedo face, screws and needle stop. Put everything on in reverse procedure from taking off.



This dial shows it at night what the illumination looks like.



Everything is put back together now. Looks great! Thanks to Bryan A for the pics.

To get your speedo, make sure that you go to our web site at custombikerstuff.com